



An eco-friendly  
encounter with  
sunsets and seas  
of clouds

# A summer escape to Dasyueshan

Words by  
Hsu Wan-ching and Fan Yen-ping  
Photography provided by  
Yeh Lin-chiao  
Translated by  
Anna Yang

Taichung's Dasyueshan (Big Snow Mt.) offers a wide variety of natural spectacles and experiences.

One of central Taiwan's best spots for escaping the summer heat, it allows visitors to enjoy hikes and leisurely forest walks.

With the arrival of summer, many people head for the mountains or the coast to enjoy seaside breezes. When it comes to the former, Taichung's options include the scenic landscapes and challenge of climbing Yuanzui Mountain.



← An enjoyable summer alternative to a seaside visit is Dasyueshan.

↓ The steep terrain is a challenge for many visitors.



↑ The walk from Yuanzui Mountain to Shao Lai Shan (mountain) is a perfect hiking trail for challengers.

Taichung's Yuanzui Mountain, a famous climbing venue located in Dasyueshan, provides a rocky elevation of 500 meters where it almost reaches to its gray and white peak standing out among surrounding mountains.

### Challenging the heights without restrictions

Most visitors would access Yuanzui Mountain at the 27-km marker on Dasyueshan Forest Road. Walking about one kilometer brings you to the start of the rocky trail.

This trail is categorized as having a medium level of difficulty for hikers and visitors should stay focused and have a decent level of fitness to make it to the top and enjoy the panoramic views, which can include a sea of clouds, sunrises and sunsets, that give one

↑→ Shao Lai Shan offers varied natural sights and a level trail, making it perfect for a leisurely walk.



an the feeling of an inseparable bond with nature.

Compared to Yanzui Mountain's trail, an easier, more relaxing way to enjoy nature with a peaceful walk is at Shao Lai Shan Trail, whose switchbacks up a slope resemble the Chinese character '之' (zhi).

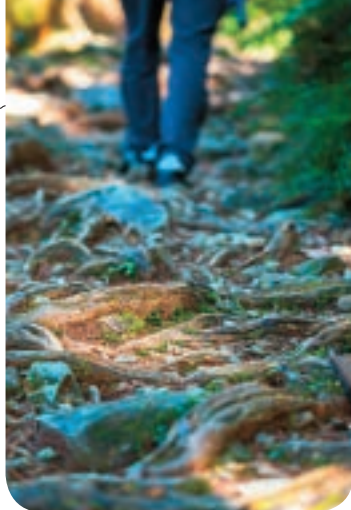
### Encountering surprises along a leisurely forest walk

The Dasyueshan National Forest Recreation Area near the trailhead to Shao Lai Shan Trail offers a varied display of natural sights. If you look closely, you can enjoy amazing glimpses of the local ecology, such as the protected Swinhoe's pheasant, often seen in early mornings, or the Taiwan red maples, which are best enjoyed here in the fall.

If you spend a night here, you can also gaze upwards to take in star-filled night



→With Shao Lai Shan's rich ecology, many pleasant surprises await along its trail.



skies. Evening visitors some also sometimes encounter Formosan white-faced squirrels enjoying late-night snacks as well as the shy Taiwan serow or Formosan Reeve's muntjac.

Dasyueshan is also home to two types of moths--the Emperor Moth and Saturnia jonasii fukudai, both living relics of the Ice Age. The latter is also known as the "moon goddess moth" in a reflection of its dreamy greenish lake colors.

If you prefer to take it easy, photographers' favorite Rollin Farm is found at the 15-km marker on Dasyueshan Forest Road. Here, a single-lane pathway before you enter the farm will lead you to an amazing natural sight that you've probably never seen. Rollin Farm's "Daze Pavilion" is actually an observation point for appreciating the famous sea of clouds here, which many visitors consider their biggest reward during trips here. If you want to create extraordinary summer memories, don't miss Dasyueshan's amazing mountain views! 🌄

info

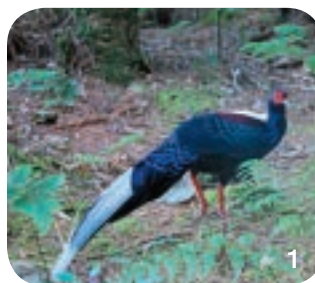
### Dasyueshan National Forest Recreation Area

Tel : (04) 2587-7901

Time : 6:30 am-5 pm

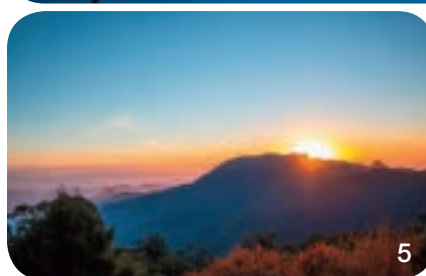
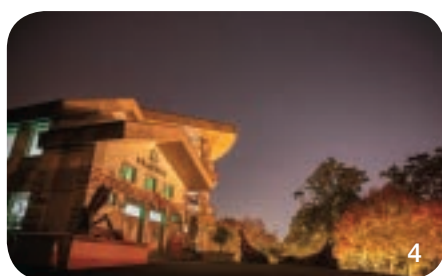
Adults/NT\$200, children/NT\$100

Reminders : The recreation area is open for reservations to spend the night a month prior to visits. Please bring your own toiletries.



1. Swinhoe's pheasants can be seen along Shao Lai Shan trail.
2. With its dreamy green lake coloring, Saturnia jonasii fukudai shows off its beauty.
3. A variety of greens can be savored in the Dasyueshan National Recreational Park Area.

↓ The beauty of the sea of clouds is breathtaking.



4. A starry night at Dasyueshan.
5. Dasyueshan's nature scenery makes it a favorite destination for photographers.